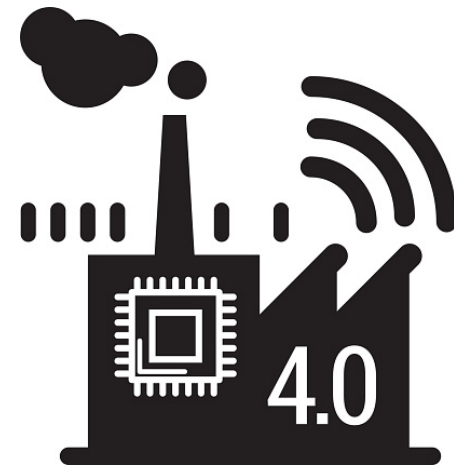


**FOCUS**tech™ *CONNECT*

**Connected Factory Platform**



# FOCUS<sup>tech</sup>™ **CONNECT** *The Features*



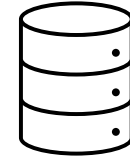
## **Cloud Connectivity**

Connect process control systems to the cloud for enhanced visibility and data analysis



## **Real-Time Monitoring**

Provide real-time insights into process alarms and critical data such as pH, Conductivity, ORP, and more



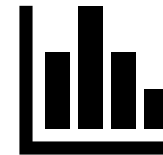
## **Centralized Data Management**

Aggregate and store data from multiple systems in a central location for easy access and analysis



## **Robust Security**

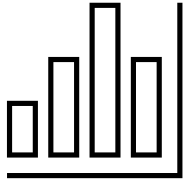
Encrypted data communication and stringent security measures safeguard process data



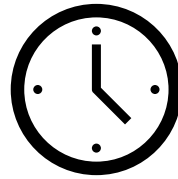
## **Visualization and Analytics**

Empowers users with intuitive dashboards, charts, and reports to monitor and optimize manufacturing processes

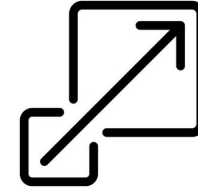
# FOCUS<sup>tech</sup>™ **CONNECT** *The Benefits*



**Empowered analytics** using readily available process data



**Real-time monitoring** allows for prompt decision-making, **reducing downtime** and **optimizing processes**



**Easily scale** to accommodate more controllers, process equipment, laboratory results and data points

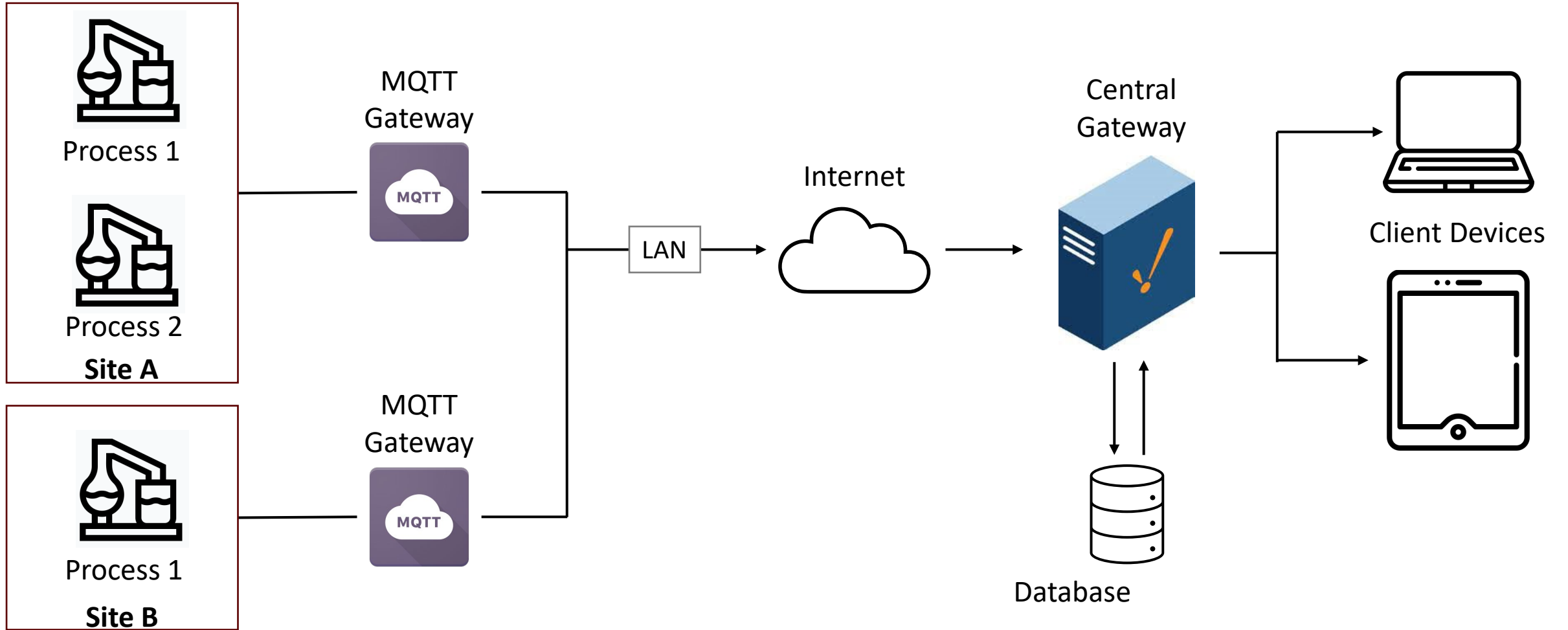


**Automated email alerts** keep appropriate personnel **informed** when processes are **out of specification**

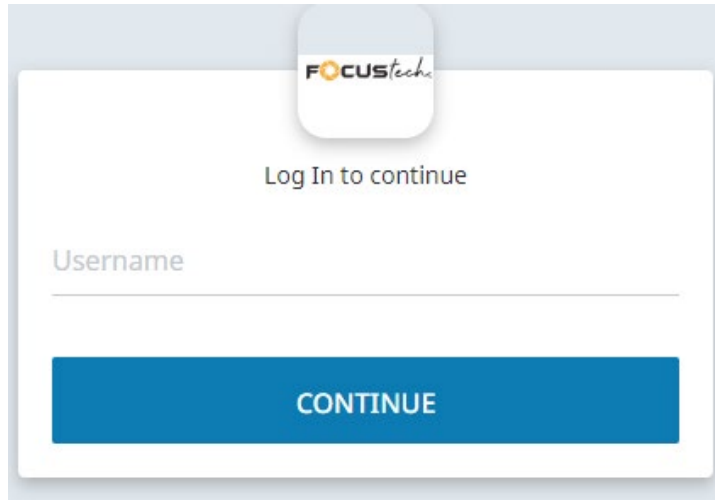


**Foster collaboration** among team members and support staff through **shared data access**

# FOCUS<sup>tech</sup>™ **CONNECT** *How it Works*



# FOCUS<sup>tech</sup>™ CONNECT *How it Looks*



FOCUS<sup>tech</sup>

Log In to continue

Username

CONTINUE



Home

- PCBMaker - Site A
- PCBMaker - Site B
- FAQs
- Insulectro Products
- Contact Us
- Templates

Welcome

We're hiring! View our [list of current openings](#) and start your new career.

FOCUS<sup>tech</sup>

Excellence in chemical manufacturing and custom blending since 1999.

ABOUT FOCUS<sup>TECH</sup>™

Exceptional Chemistry Starts Here

INSULECTRO

Current Time in UTC:  
Mar 29, 2024, 23:16:51

Web-Based Portal for Accessing Real-Time Dashboards and Data

# FOCUS<sup>tech</sup>™ CONNECT *How it Looks*

PCBMaker - Site A CC-4000 DES Line Overview

Controller Mode

Standby Switch Auto Switch Hand Switch

System Status

Auto Mode Standby Mode

System Control

Water Add Oxidizer Add Acid Add

Process Level OK Spent Valve


ORP (mV) 617

Specific Gravity 1.247

Conductivity (mS) 241

Atmospheric Chlorine (ppm) 0.06

No Alarms



0 ACTIVE 0 SHELVED

FILTERS (7): Active, Unacknowledged Active, Acknowledged Remove #

Active Time	Name	Priority	State
03/29/2024 14:03:53	ORP High	Medium	Cleared, Un...
03/29/2024 02:17:25	Spent Full	Low	Cleared, Un...
03/27/2024 18:52:41	ORP High	Medium	Cleared, Un...
03/27/2024 04:44:23	Spent Full	Low	Cleared, Un...
03/26/2024 01:28:29	ORP High	Medium	Cleared, Un...
03/25/2024 21:25:40	ORP High	Medium	Cleared, Un...
03/25/2024 16:20:52	ORP High	Medium	Cleared, Un...
03/25/2024 14:00:01	Acid Low Flow	Medium	Cleared, Un...
03/22/2024 23:44:36	Spent Full	Low	Cleared, Un...
03/22/2024 14:01:57	Water Low FI...	Medium	Cleared, Un...

FOCUS<sup>tech</sup>™ INSULECTRO

Current Time in UTC:  
Mar 29, 2024, 23:49:14

Overview Screen: Controller in Auto Mode – All manipulated variables in operating range



# FOCUS<sup>tech</sup>™ CONNECT *How it Looks*

PCBMaker - Site A CC-4000 DES Line Overview

Controller Mode

Standby Switch Auto Switch Hand Switch

System Status

Auto Mode Standby Mode

System Control

Water Add Oxidizer Add Acid Add

Process Level OK Spent Valve


ORP (mV) 582

Specific Gravity 1.249

Conductivity (mS) 234

Atmospheric Chlorine (ppm) 0.28

**Alarm!!**



1 ACTIVE 0 SHELVED

FILTERS (7): Active, Unacknowledged Active, Acknowledged Remove All

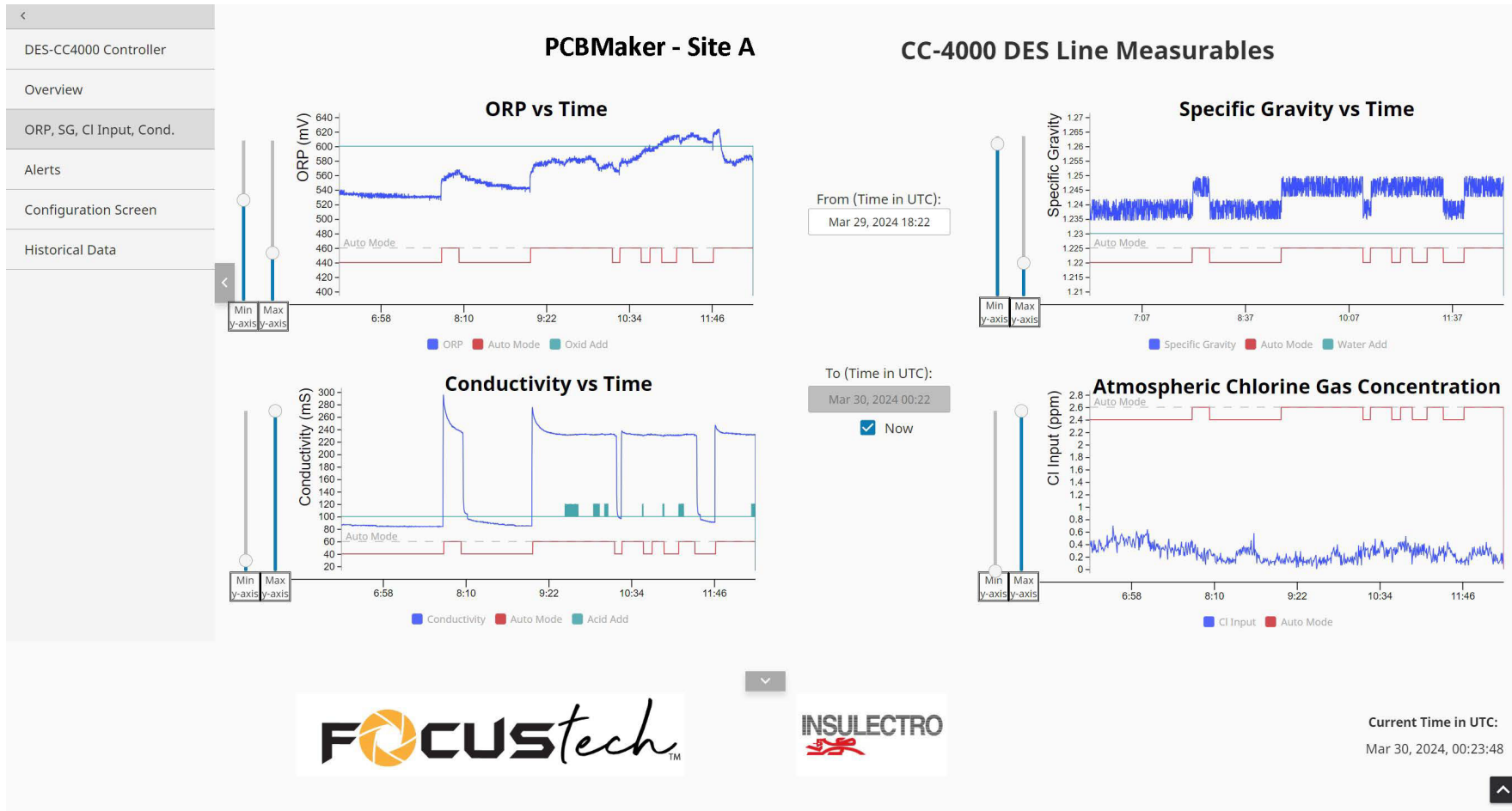
Active Time	Name	Priority	State
03/29/2024 23:50:39	ORP High	Medium	Active, Unack...
03/29/2024 14:03:53	ORP High	Medium	Cleared, Unack...
03/29/2024 02:17:25	Spent Full	Low	Cleared, Unack...
03/27/2024 18:52:41	ORP High	Medium	Cleared, Unack...
03/27/2024 04:44:23	Spent Full	Low	Cleared, Unack...
03/26/2024 01:28:29	ORP High	Medium	Cleared, Unack...
03/25/2024 21:25:40	ORP High	Medium	Cleared, Unack...
03/25/2024 14:00:01	Acid Low FLOW	Medium	Cleared, Unack...
03/22/2024 23:44:36	Spent Full	Low	Cleared, Unack...
03/22/2024 14:01:57	Water Low FL...	Medium	Cleared, Unack...

FOCUS<sup>tech</sup>™ INSULECTRO

Current Time in UTC: Mar 29, 2024, 23:58:54

Overview Screen: Controller in Auto Mode – High ORP Alarm

# FOCUS<sup>tech</sup>™ CONNECT *How it Looks*



Web-Based Access to data logs of process values, chemical additions and alarm conditions



# FOCUS<sup>tech</sup>™ CONNECT *How it Looks*

FA Focus Tech Alerts 5:50 PM  
To: Process Engineer >

## Ignition Alarm Notification: ORP High | Mar 29, 11:50 PM UTC

Location: PCBM - Site A DES Line CC4000

Alarm Name: ORP High

Description: Alarm Relay 3 on the Rosemount meter, indicating level of ORP that is close to causing chlorine gas generation

Shutdown Auto Mode? No

Potential Causes: Lack of use of chemical add timers, Too high of add time for oxidizer, Too low of delay time for oxidizer

6:54  
PCBMaker - Site A CC-4000 DES Line Overview

Controller Mode

Standby Switch Auto Switch Hand Switch

System Control

Water Add Oxidizer Add Acid Add

Process Level Full Spent Valve

System Status

Auto Mode Standby Mode

ORP (mV) 573 Specific Gravity 1.239

Conductivity (mS) 92 Atmospheric Chlorine (ppm) 0.18

6:50  
PCBMaker - Site A CC-4000 DES Line Alerts

0 ACTIVE 0 SHELVED

FILTERS (7): Active, Unacknowledgec Remove All

Active Tin	Name	Priorit	State
03/27/2...	Acid Low Flow	Med...	Cleared, U...
03/27/2...	Spent Full	Low	Cleared, U...
03/26/2...	Acid Low Flow	Med...	Cleared, U...
03/24/2...	Acid Low Flow	Med...	Cleared, U...
03/22/2...	ORP High	Med...	Cleared, U...
03/22/2...	Acid Low Flow	Med...	Cleared, U...
03/20/2...	Acid Low Flow	Med...	Cleared, U...
03/20/2...	Spent Full	Low	Cleared, U...
03/11/2...	Oxidizer Lo...	Med...	Cleared, U...
03/04/2...	ORP High	Med...	Cleared, U...
03/04/2...	Spent Full	Low	Cleared, U...
03/03/2...	ORP High	Med...	Cleared, U...
03/03/2...	ORP High	Med...	Cleared, U...
03/03/2...	ORP High	Med...	Cleared, U...
02/29/2...	Oxidizer Lo...	Med...	Cleared, U...
02/28/2...	Spent Full	Low	Cleared, U...
02/27/2...	Spent Full	Low	Cleared, U...

6:55  
PCBMaker - Site A CC-4000 Historical Data

t_stamp	Atmospheric Chlorine (ppm)	ORP (mV)	Specific Gravity	Conductivity (mS)
6:55:09 pm	0.43	536	1.241	84
6:58:45 pm	0.34	533	1.239	84
7:02:21 pm	0.30	534	1.237	84
7:05:57 pm	0.43	530	1.235	84
7:09:33 pm	0.64	536	1.242	85
7:13:09 pm	0.32	529	1.237	84
7:16:45 pm	0.30	531	1.240	84
7:20:21 pm	0.38	532	1.240	83
7:23:57 pm	0.32	532	1.235	84
7:27:33 pm	0.41	530	1.241	84
7:31:09 pm	0.30	530	1.241	84
7:34:45 pm	0.29	531	1.237	84
7:38:21 pm	0.23	530	1.238	83
7:41:57 pm	0.27	528	1.237	84

From (Time in UTC): Mar 29, 2024 18:55 To (Time in UTC): Mar 30, 2024 00:55

# Of Data Pnts: 100

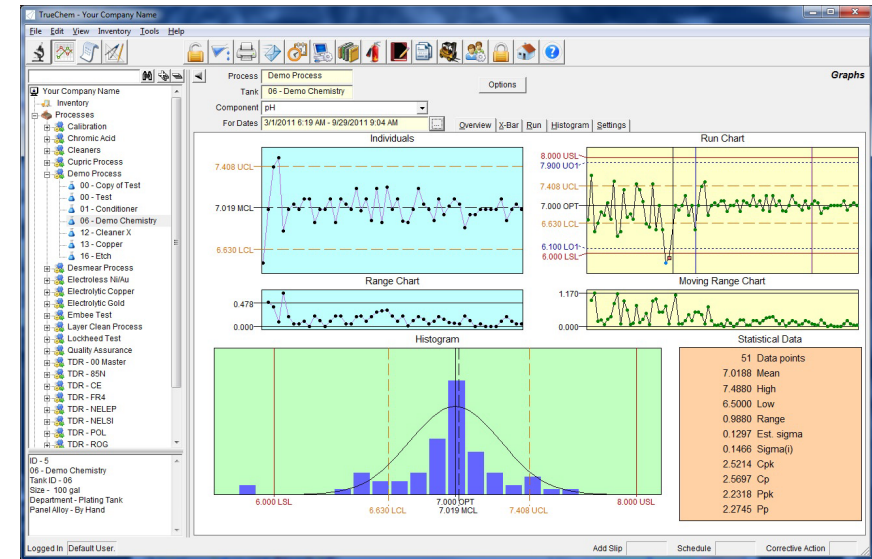
Real-Time Status Monitoring, Email Alarm Notification, and Mobile Device Compatibility

# FOCUS<sup>tech</sup>™ CONNECT *The Future*

Dashboards, data logging and alarm notifications for:



Process Equipment



Laboratory Analyses